



“For I know the plans I have for you,” declares the LORD, “plans to prosper you and not to harm you, plans to give you hope and a future.” Jeremiah 29:11

To strive for respect, enjoyment and excellence for all!

21.04.26

Dear Parents and Carers,

I hope that everyone had a great Easter break. It is lovely to return to some sunshine at last!

Collective Worship

In Collective Worship, our theme is Respect (including for our Environment – Earth day) remembering to pray for others, linked to Ephesians 6:18.



Our Music Genres this term are linked to our history through music, beginning in the Renaissance with Sacred choral music: Spem In Alium – Thomas Tallis

Salford is 100!



We're excited to share that it's Salford's 100th birthday today – a huge moment for the city and a fantastic opportunity to celebrate with your school communities. Here is the link to the Salford 100 film, now live on the council's YouTube channel: <https://www.youtube.com/c/salfordmedia/videos>

'Pupils, including those with special educational needs and/or disabilities (SEND), thrive at St Andrew's School. They are happy at school. Typically, pupils behave well and they develop positive attitudes to learning. Pupils strive each day to meet leaders' high expectations of their learning and behaviour.' OFSTED May 2023



The Salford Way Poem

The Salford Way is a powerful, community-led poem created as part of Salford's Centenary celebrations. Co-written by Salford artists Matt Concannon (Eccles born and bred) and Jody Findley, the poem brings together the voices and experiences of local people.

To create the piece, the artists spoke with Salford residents across Eccles — gathering stories and reflections in libraries, community centres, schools and foodbanks. These conversations have been woven into a single, collective poem that captures the spirit, resilience and identity of the city. The film has been produced by Brave Day, with the poem commissioned by Art with Heart.

The film itself is in two parts – first featuring poets Matt and Jody reading, followed by a second video with community groups across the city reading lines – offering a rich and inclusive snapshot of Salford today.

Attendance

Here at St Andrews, we believe that school attendance is incredibly important. Regular attendance at primary school is essential because these years lay the foundation for a child's future learning, confidence, and wellbeing.

When children attend school consistently, children build strong literacy and numeracy skills, develop friendships, and learn important routines such as responsibility and time management. Missing school can quickly lead to gaps in understanding, making it harder for children to keep up and feel confident in class.

Beyond academics, being present every day helps children feel part of a community, supporting their emotional development and sense of belonging. By prioritising attendance, parents give their children the best possible start in life and help set positive habits that will benefit them throughout their education.

An additional strategy that we are introducing this term is Attendance Ambassadors:

Year 3 - Khadijah

Year 4 - Olivia

Year 5 - Naomi

Year 6 - Alfie



Their roles in school will be to greet members of their class who have been absent on their return, check in, see how they are feeling coming back and tell them what they have missed, maybe share their work so that the child can see what learning they have missed. Also, we are introducing a Lunchtime Award (1 child each week) who will be nominated by our Play Leaders, for being role models of our school values. Play leaders will be looking forward to kindness, sharing, being a good sportsperson, being helpful, looking after others etc.

'Pupils, including those with special educational needs and/or disabilities (SEND), thrive at St Andrew's School. They are happy at school. Typically, pupils behave well and they develop positive attitudes to learning. Pupils strive each day to meet leaders' high expectations of their learning and behaviour.' OFSTED May 2023



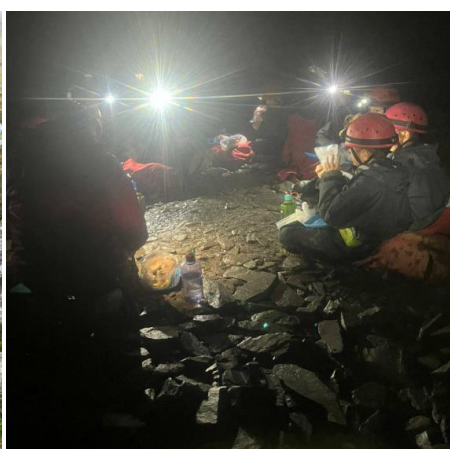


Lledr Hall

Letters have gone out to invite our current Year 4 and 5 children to our annual trip to Lledr Hall in September 2026. It's the highlight of the year and I encourage everyone from Year 4 and 5 to attend. It's so good that I have a waiting list of staff who want to attend and have had to pull names out of a hat before now! It's an amazing experience.

Why should children go to Lledr Hall?

- Wide range of exciting outdoor activities - Children can try things like climbing, canoeing, gorge walking, mountain biking, and ropes courses
- Builds confidence and independence - Activities push children out of their comfort zone and help them become more self-reliant
- Encourages teamwork and social skills - Group challenges help children cooperate, communicate, and build friendships
- Develops leadership and problem-solving skills - Tasks like raft building and orienteering require thinking, planning, and leading others
- Improves physical health and fitness - Outdoor adventures involve lots of movement and exercise in a fun way
- Learning outside the classroom - Children learn about geography, nature, and the environment through real-life experiences
- Boosts motivation and enjoyment of learning - Outdoor education can increase enthusiasm and engagement when back at school
- Safe and well-supervised environment - Activities are led by trained, qualified staff with strong safety standards
- Tailored to different abilities - Programmes are adapted so every child can succeed and feel included
- Creates lasting memories and friendships - Residential trips help children bond and remember the experience for years
- Time away from screens and technology - Children stay busy with real adventures instead of phones or games
- Beautiful natural setting - Located in Snowdonia, surrounded by mountains, rivers, and lakes



happy at school. Typically, pupils behave well and they develop positive attitudes to learning meet leaders' high expectations of their learning and behaviour.' OFSTED May 2023

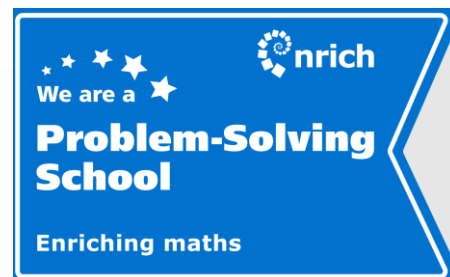


If you have any questions or worries about the trip, finance, health and safety, sleep arrangements etc. then please come and see me. I have been a number of times so happy to help.

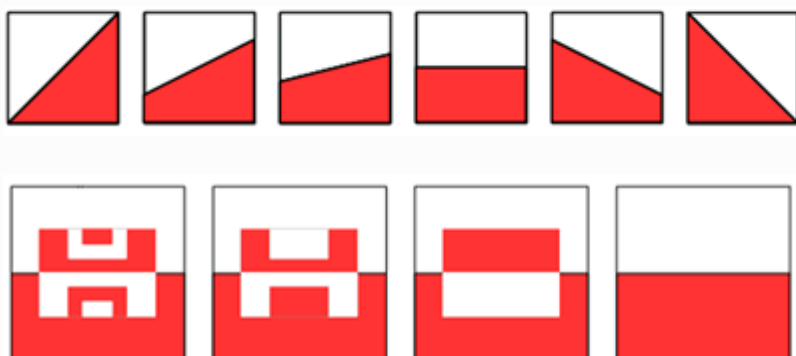


Reminder – after school clubs start next week.

Maths Problem of the Fortnight – Year 1, 2



These images show squares split in half:



How might you check that each was correct?
Can you think of more ways to split a square into two halves?

Maths Problem of the Fortnight – Year 3, 4, 5, 6

On a digital 24 hour clock, at certain times, all the digits are consecutive (in counting order). You can count forwards or backwards.

For example, 1:23 or 5:43.

How many times like this are there between midnight and 7:00?

How many are there between 7:00 and midday?

How many are there between midday and midnight?



Reminder – school lunches

Our kitchen staff are having issues with children arriving at the catering stand requesting a lunch when the office staff have not been informed. The school policy is that the office should be informed a week in advance so that the correct amount of food can be ordered and cooked. Having ‘one off’ school lunches are only provided in an emergency. Please help our staff with this and give a weeks notice if you would like your child to change their dinner arrangements.



I kindly ask all parents and carers to check their child’s school meal account and ensure that any outstanding dinner money is paid as soon as possible. We understand that there may occasionally be reasons for balances to build up, and we are here to support you if needed. However, keeping accounts up to date helps the school to continue providing high-quality meals for all pupils. If you have any concerns or would like to discuss payment options, please do not hesitate to contact the school office in confidence. Thank you for your understanding and continued support.

God bless,
Mrs Bladen-Kay
Head Teacher

Spring/Summer Term 2026 Key Dates (correct at time of writing)	
April	
02.04-20.04	Easter Break
20.04	Children Back In School
27.04	After school clubs start
29.04	Full Governing Board Meeting Year 4 Trip
May	
04.05	School is closed for the Bank Holiday
08.05	Reception Sharing Assembly
11.05	EYFS Church trip (tbc)
11.05-14.05	Y6 SATS
15.05	Y5 Sharing Assembly
19.05	Y6 Shakespeare Festival Project Launch
22.05	Year 1 Sharing Assembly
25-31st	Half Term
June	
1 st /2 nd June	Eid?
8-12 th	Year 1 Phonics Screening Year 4 Multiplication Check
12.06	Year 3 sharing Assembly
16.06	Buildings and Finance Committee
19.06	Year 4 Sharing Assembly
25-26 th	Y6 High School Transition visits
26.06	Reception, Year 1 and 2 Music Celebration
30.06	Sports Day (depending on weather) Standards and Welfare Committee
July	
02.07	EYFS Trip
03.07	Year 2 Sharing Assembly
07.07	Year 6 Shakespeare Festival (until 8.30pm)
09.07	Sports Day (if 02.07 postponed)
10.07	After School clubs finish Key Stage 2 Music Celebration
13-17 th	Transition visits to new classes, meet new teachers
15.07	Year 5 Trip
14.07	Full Governing Board meeting
16.07	Summer Fair
17.07	Reports go home
22.07	1.30 Y6 Leavers Assembly End of Term - school closes at 2.30pm

‘Pupils, including those with special educational needs and/or disabilities (SEND), thrive at St Andrew’s School. They are happy at school. Typically, pupils behave well and they develop positive attitudes to learning. Pupils strive each day to meet leaders’ high expectations of their learning and behaviour.’ OFSTED May 2023

